



SALAMANCA ARTS CENTRE presents SAC Resident Artist

# HANNAH BLACKMORE

# Song of the Sea

13 FEBRUARY - 26 FEBRUARY 2020

**OFFICIAL OPENING:** Thursday 13 February @ 6pm

**PAINTING DEMONSTRATION:** Saturday 15 February @10am

SIDESPACe GALLERY Salamanca Arts Centre, Level 1  
77 Salamanca Place, Hobart, Tasmania





# SONG OF THE SEA

## HANNAH BLACKMORE

*"Smell the sea, and feel the sky, let your soul and spirit fly." - Van Morrison*

*"I grew up on the tiny island of Jersey in the English Channel. Growing up on an island gives you a deep appreciation of the sea. You experience its magnificence, its power, its beauty yet also its destructive nature on a daily basis. I have always felt a need to be close to the sea. It is part of my identity and centres me, wherever I may be in the world. Now living on the larger island of Tasmania, I find new moods and inspiration in the coastline here, which has given my paintings a deeper appreciation of the ocean that surrounds me now.*

*I have always been drawn to water, and love exploring this through my work. I find it relaxing and enjoy experimenting with different painting techniques to try and capture it. I want my paintings to have a calming effect on the viewer, and be peaceful to live with. Art can heal, and we find ourselves drawn to the pieces we need the most.*

*Using a palette knife to create texture along with a dry-brush technique; I can create clouds, skies, beaches and seas. I enjoy seeing the paint go on its journey across the canvas and often stumble across areas of intrigue by trial and error, which sometimes end up in the final piece. It has taken me twenty years to know when to stop painting, when to let go and not overwork a piece."*

Hannah Blackmore is a Fine Art painter based in Hobart, Tasmania. Creating landscapes of the natural world, her work allows her to continually explore new places and painting techniques, inviting the viewer to see nature in different ways. Hannah comes from a creative family and has made art all her life. Working primarily in acrylic, her work has significantly evolved over the years since completing a Fine Arts degree.

Hannah is a resident artist of Salamanca Arts Centre, and a member of Off Centre Gallery. She shows her work in Huon Art in Cygnet, and Wild Island Tasmania in Hobart. She is passionate about helping artists succeed and has created a membership site and community for artists called *This Business of Art*.

**[hannahblackmore.com](http://hannahblackmore.com)**  
**[info@hannahblackmore.com](mailto:info@hannahblackmore.com)**  
**FB: Hannah Blackmore Artist**  
**IG: @hannahblackmoreartist**



Azure 20 x 20cm  
\$150



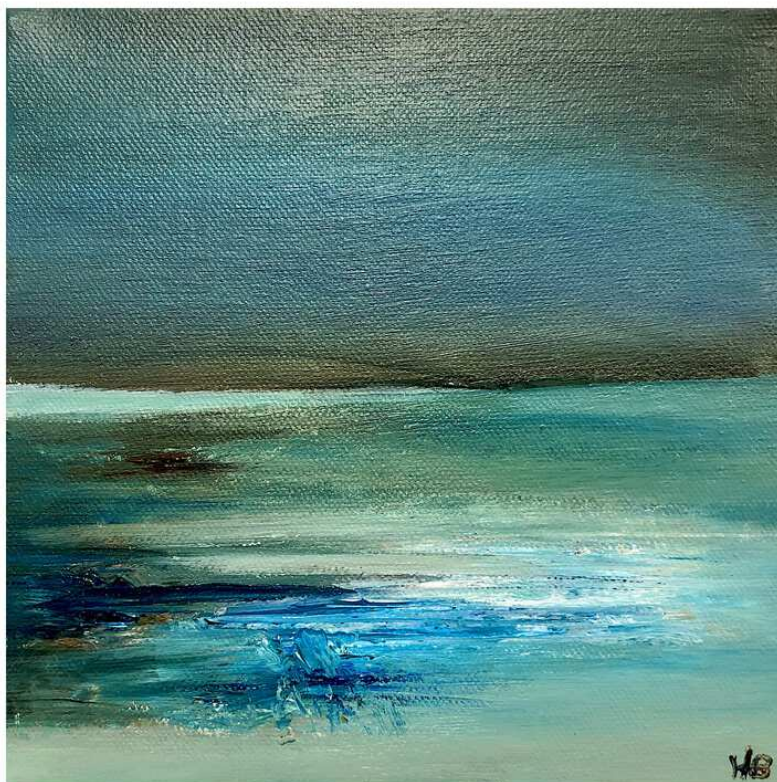
Synergy 20 x 20cm  
\$150



Bright Sky 20 x 20cm  
\$150



Summer Breeze 20 x 20cm  
\$150



Daydream 20 x 20cm  
\$150



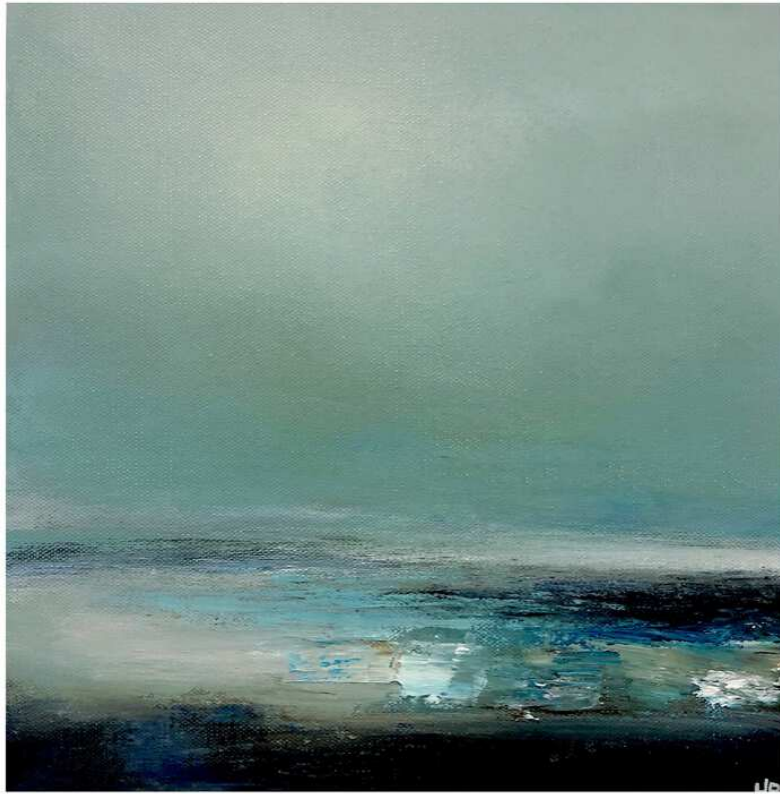
Glimpse of Light 30 x 30cm  
\$250



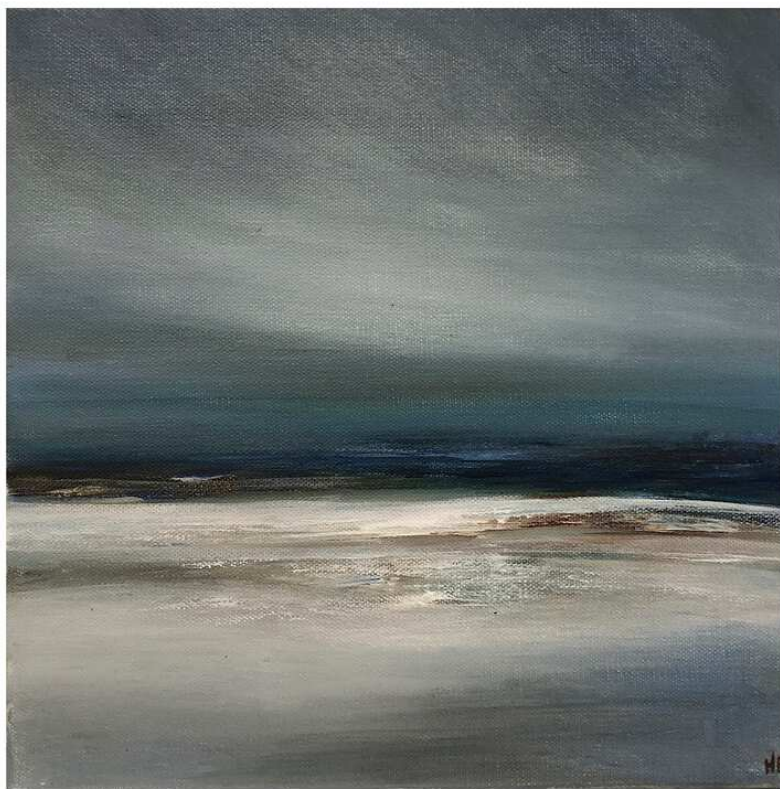
Weather 30 x 30cm  
\$250



Ocean Wind 30 x 30cm  
\$250



Rock Pools 30 x 30cm  
\$250



Ballad of the Sea 30 x 30cm  
\$250



Low Tide 45 x 45cm  
\$450



Gaze 45 x 45cm  
\$450



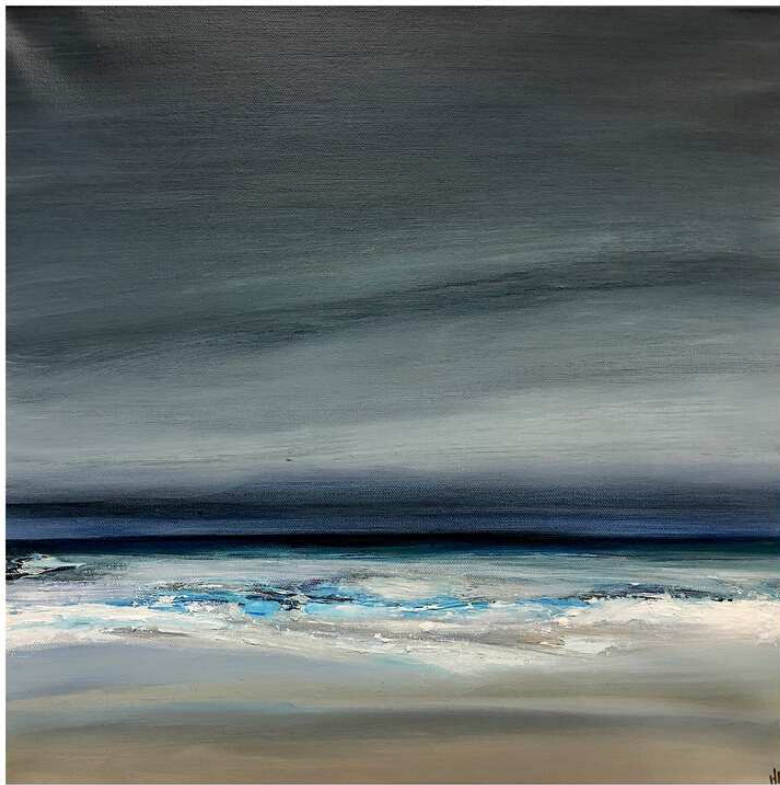
Peaceful Sea 45 x 45cm  
\$450



Sea Foam 45 x 45cm  
\$450



Submerge 45 x 45cm  
\$450



Stormy Sea 45 x 45cm  
\$450



The Tide is High 75 x 100cm  
\$1500



Tempest 75 x 100cm  
\$1500



White Waves 75 x 100cm  
\$1500



White Clouds 75 x 100cm  
\$1500



Ocean Melody 75 x 100cm  
\$1500



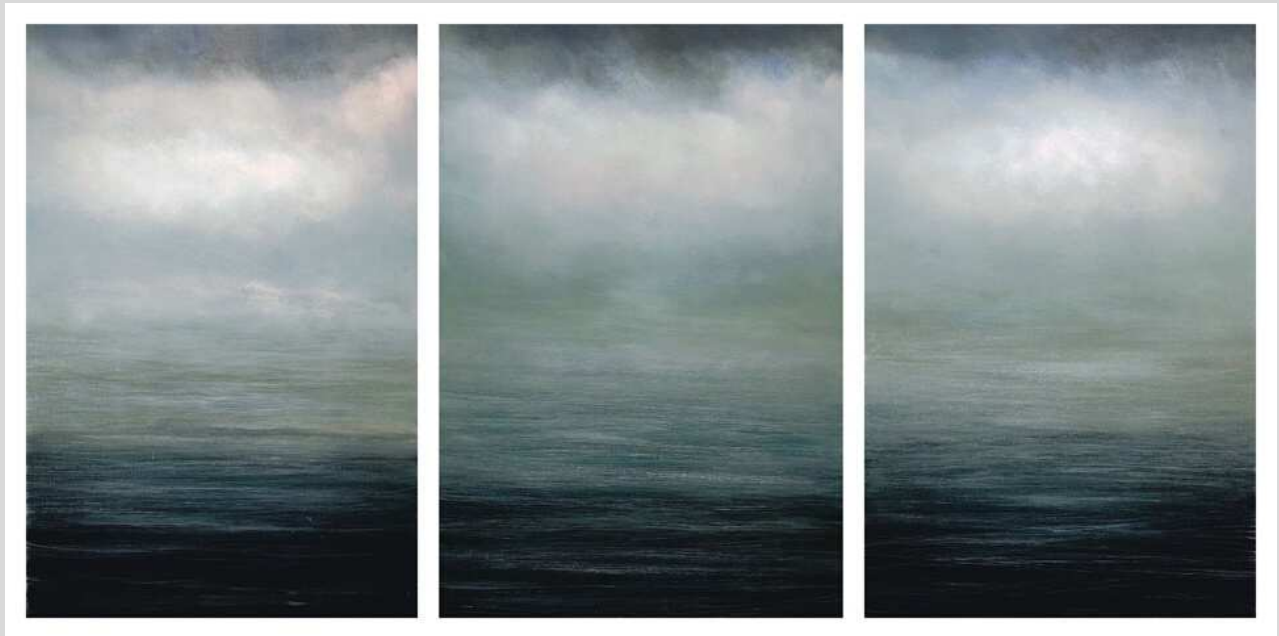
Symphony 75 x 100cm  
\$1500



Tranquillity 90 x 120cm  
\$2500



La Chanson de la Mer 90 x 120cm  
\$2500



Breathe 3 x 50 x 75cm  
\$2500

All works are acrylic on canvas.

If you would like more information about any of the artworks in *Song of the Sea*, please email me at the address below. Thank you.

[info@hannahblackmore.com](mailto:info@hannahblackmore.com)

[hannahblackmore.com](http://hannahblackmore.com)

Instagram: [@hannahblackmoreartist](https://www.instagram.com/hannahblackmoreartist)

Facebook: Hannah Blackmore Artist